

## Clinical procedure

### Violet light source (405) diagnosis



**Make darkness in the room.**

**By illuminating the inflamed sites with the UV lamp, it is possible to observe a red / violet border.**

**This happens because the bacteria produce porphyrins that are fluorescent.**

**Show fluorescence to the patient using a mirror.**

## Clinical procedure

### Aladent application



**Insert the product into the pocket with the dedicated capillary tip. Complete the operation for each site. Use opener or cotton rollers to minimize salivation and dilution of the product.**

**60 minutes incubation  
(in waiting room)**

## Clinical procedure

### Aladent activation Red light source (630)



**Photodynamic activation.**

**Illuminate each site with the red lamp for  
7 min**

**The tip of the illuminator must be kept  
very close to the site .**

# ( $\delta$ -aminolevulinic-acid)-PDT -ALADENT

Mucosite after 21 days



Gingival retraction, initial response to healing

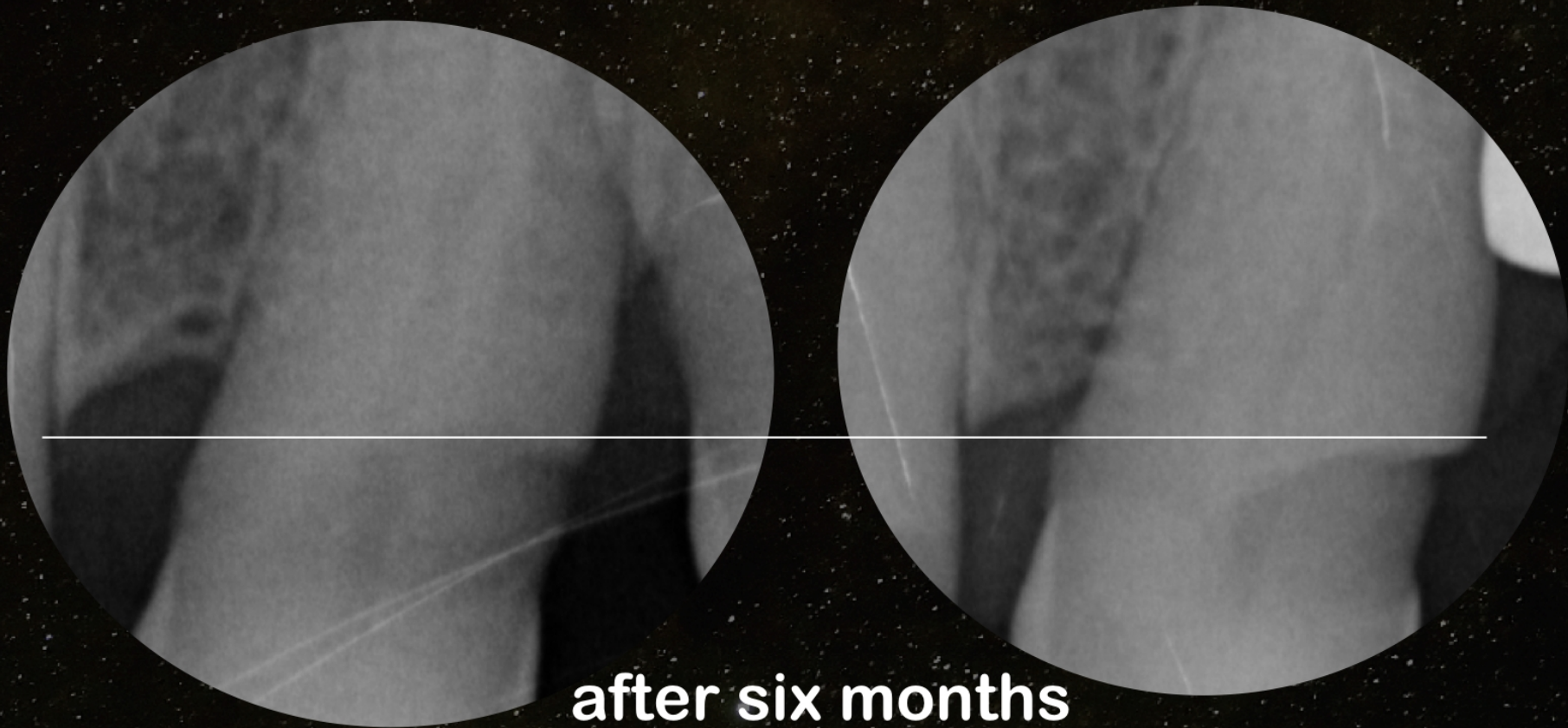


# ( $\delta$ -aminolevulinic-acid)-PDT-ALADENT

after six months



**( $\delta$ -aminolevulinic-acid)-PDT  
ALADENT**



**after six months**

## Clinical procedure

Plaque index (PI) Bleeding on probing (BOP) Probing depth (PD), Pre-op x-ray

Violet light source (405) diagnosis

Scaling and root planing treatment

Aladent application

Wait 1 hour

Red light source (630) 5-7 minutes activation

Post-op 2 weeks control

Post-op 2 months control +PI+BOP+PD

Post-op 6 months control +PI+BOP+PD

Post-op 1 year control +PI+BOP+PD+x-ray